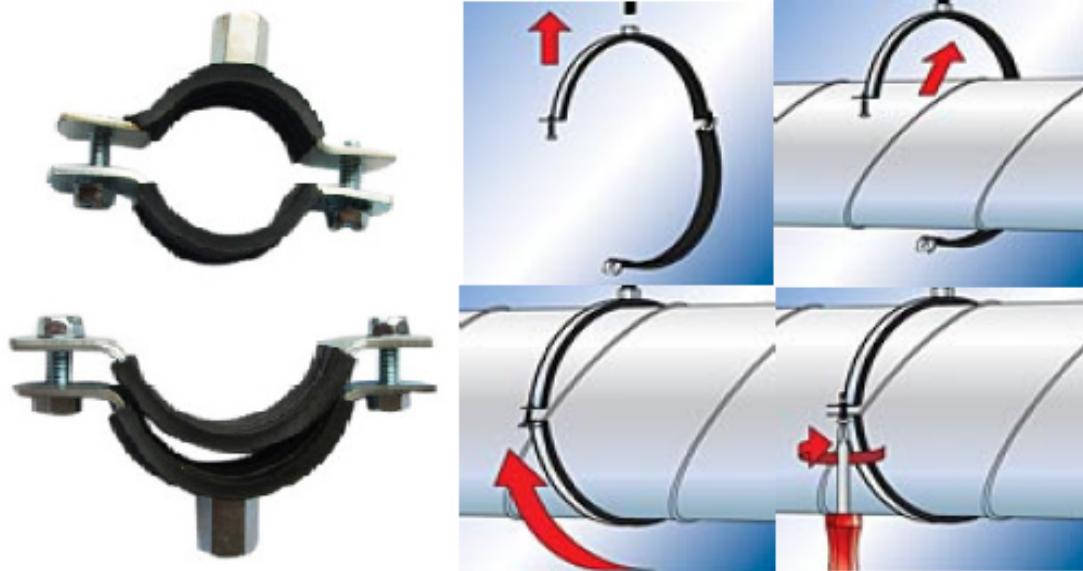


G.I. RUBBER CLAMP

(重力管夹)



SPECIFICATIONS OF MATERIAL

no	PART	MATERIAL
1	MATERIAL / FINISH	BRIGHT ZINC PLATED G.I.
2	CONNECTION	5/16", 3/8", 1/2"
3	RUBBER	EPDM, 53 SHORE, T:5MM
4	ACOUSTIC INSULATION	26dB
5	SCREWS	M8

DIMENSIONS

SIZE in mm (inches) APPLICATION RANGE (mm)	Suitability				NUT CONNECTION	
	COPPER	SS141	SS213	AE/AW		
15-19 (½")	o			o (¾")	5/16"	3/8"
20-25 (¾")	o	o (½")		o (½")	5/16"	3/8"
26-30 (1")	o	o (¾")		o (¾")	5/16"	3/8"
32-36 (1¼")	o	o (1")	o	o (1")	5/16"	3/8"
38-43 (1½")	o	o (1¼")	o	o (1¼")	5/16"	3/8"
47-51 (2")	o	o (1½")	o	o (1½")	5/16"	3/8"
60-65 (2")		o		o	5/16"	3/8"
75-80 (2½")	o (3")		o (3")	o	5/16"	3/8"
87-92 (3")		o (3")		o	3/8"	1/2"
107-114 (4")	o (4")	o (4")	o (4")	o	3/8"	1/2"
159-166 (6")			o (6")	o	3/8"	1/2"

* Larger sizes also available