

The background of the entire page is a close-up, macro photograph of water droplets on a textured, metallic surface. The droplets are of various sizes, some in sharp focus and others blurred, creating a bokeh effect. The overall color palette is a range of blues, from deep navy to light, airy cyan.

UJ Piping Solutions

RWDP . LEAD-FREE . JIS K6741

**VISIT
OUR
WEBSITE**



**VISIT
OUR
OFFICE**



CERT NO.: 2024-2-2682
ISO 9001 : 2015





UJ brand JIS AE standard uPVC pipes and fittings are manufactured according to stringent quality control standards, meeting the requirements of your project requirements in the RWDP segment. Our RWDP system is the first in Singapore to achieve ISO 9001:2015 certification, offering unparalleled assurance for your drainage needs.

Key features include:



- **UV-resistant finishing to withstand tropical climates**
- **Lead-free content compliant with Singapore BCA's Green Mark Certification Scheme**
- **Vicat softening temperature point meeting JIS standards, ensuring defect-free concrete casting**

With years of experience, our company has supplied RWDP systems for numerous projects across the Asia-Pacific region, providing effective drainage to over 5,000,000 square meters and counting.

Our proprietary label for RWDP pipes & fittings:



JAPAN INDUSTRIAL STANDARD PIPES

<i>measurements in mm</i>		Thickness		
Nominal Diameter	Outer Diameter	AE 	AW 	AE0
13	17.8 - 18.2	1.8	-	-
16	12.8 - 22.2	1.8	2.7	-
20	25.8 - 26.2	1.8	2.7	-
25	31.8 - 32.2	1.8	3.1	-
30	37.8 - 38.2	1.8	3.1	-
40	47.8 - 48.2	1.8	3.6	-
50	59.8 - 60.2	2.2	4.1	1.8
65	75.7 - 76.3	2.2	4.1	1.8
75	88.7 - 89.3	2.7	5.5	1.8
100	113.6 - 114.4	3.1	6.6	2.2
125	139.6 - 140.4	4.1	7.0	-
150	164.5 - 165.5	5.1	8.9	2.7
200	215.3 - 216.7	6.5	10.3	4.0
250	266.1 - 267.9	7.8	12.7	4.0
300	317.0 - 319.0	9.2	15.1	5.0
350	370.0 - 371.3	10.5	-	-
400	420.0 - 421.5	11.8	-	-
450	470.0 - 471.7	13.2	-	-
500	520 - 521.9	14.6	-	-
600	630.0 - 633.2	17.8	-	-
800	800.0	20	-	-

JIS K6741 VU PIPES & FITTINGS (AE)



JIS K6741 VU pipes	
Common Name	AE Standard Pipe
Purpose	RWDP, Drainage, Industrial
Recommended Pressure Rating	up to maximum of 6 bars
Size	13mm - 800mm diameter (75mm onwards come with one end socket-ended)
Fitting compatibility	JIS K6739 VU-DV fittings (commonly known as AE fittings)

One-stop solution for RWDP system

Presenting our comprehensive range of UJ brand AE UPVC fittings, expertly crafted for rainwater downpipe applications. Our fittings are tested and certified to be in adherence to JIS standard and designed to ensure effective and reliable rainwater management in both residential and commercial environments.

Key features:

- **Lead-Free Composition:** Our lead-free fittings provide an environmentally friendly, safe option that meets health and safety standards, ideal for sustainable construction and eco-conscious installations.
- **Robust and Durable:** Constructed from high-grade UPVC, designed to ensure long-lasting performance
- **Complete Range of Fittings:** Our extensive catalogue includes a variety of fittings to cater to all installation needs, providing seamless integration and compatibility with rainwater downpipe systems
- **In-house Fabrication:** We are one of the key players in PVC fabrication and in the customizing of PVC solutions for a multitude of purposes. We provide consultancy and design-and-build services to our customers.

LANDMARK PROJECTS using UJ LEAD-FREE RWDP FITTINGS

Jurong Regional Line: J101, J102, J103, J105, J106, J107, J108, J109, J111



North-South Corridor: N111, N112, N113, N115



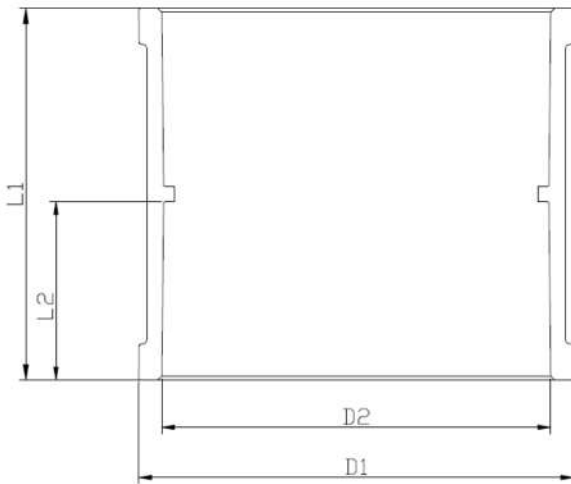
Johor Bahru - Singapore RTS Link - T235



LEAD-FREE AE FITTINGS (RWDP)



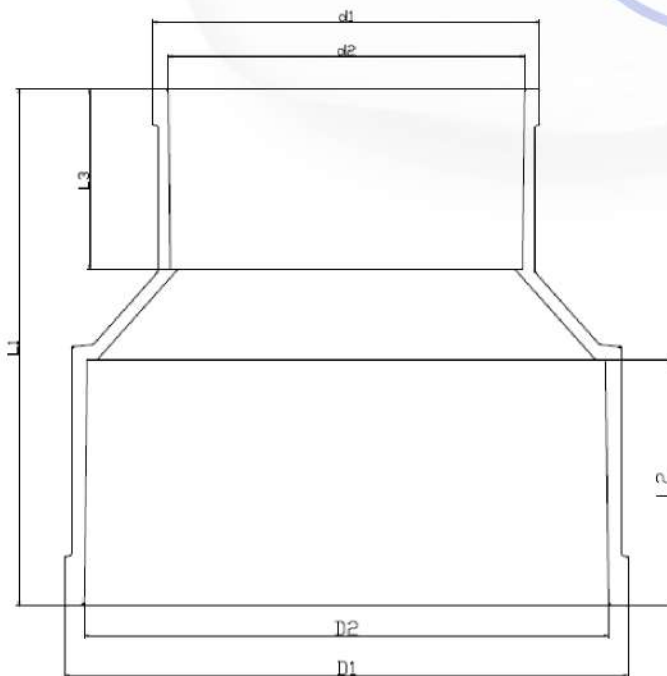
Socket / Coupling



	measurements in mm			
Nominal Diameter	D1	D2	L1	L2
50	69.35	60.35	53	25
65	85.40	76.40	73	35
75	99.65	89.45	84	40
100	127.45	114.55	104	50
125	154.68	140.70	134	65
150	182.65	165.85	164	80
200	236.0	217.30	225	110
250	290.40	268.60	266	130
300	343.30	319.80	287	140

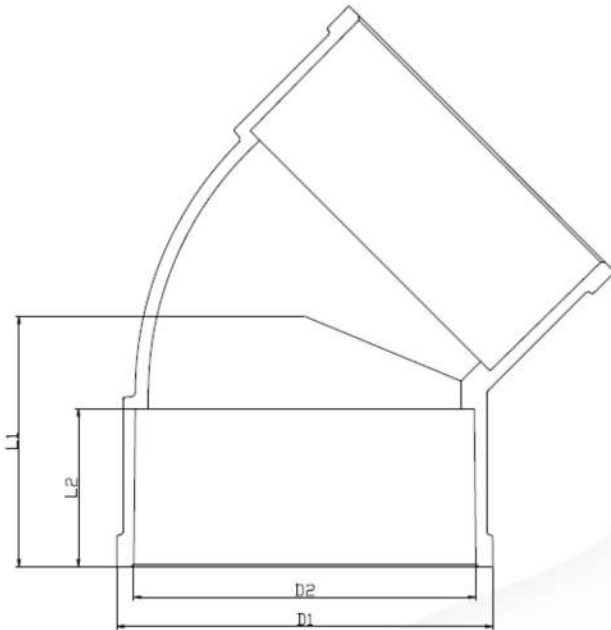


Reducing Socket / Coupling



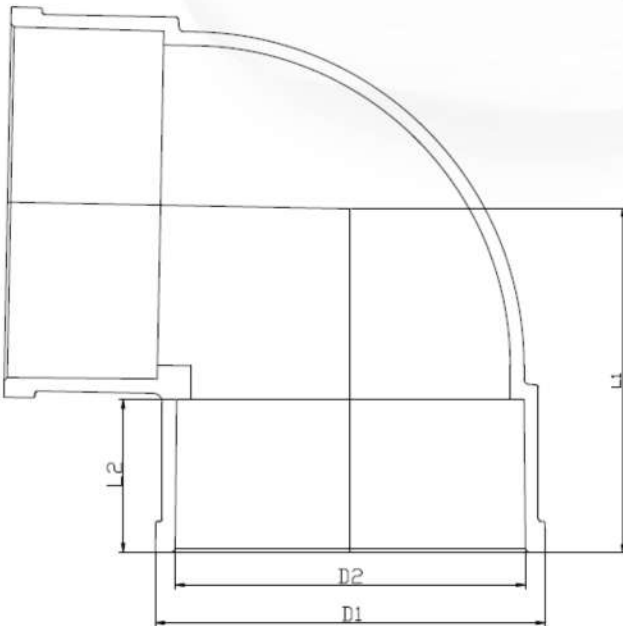
	measurements in mm						
Nominal Diameter	D1	D2	d1	d2	L1	L2	L3
65 x 50	85.40	76.40	69.35	60.35	80	35	25
75 x 65	99.65	89.45	85.40	76.40	100	40	35
100 x 50	127.45	114.55	69.35	60.35	105	50	25
100 x 65	127.45	114.55	85.40	76.40	115	50	35
100 x 75	127.45	114.55	99.65	89.45	120	50	40
125 x 100	154.68	140.70	127.45	114.55	150	65	50
150 x 75	182.65	165.85	99.65	89.45	160	80	40
150 x 100	182.65	165.85	127.45	114.55	170	80	50
150 x 125	182.65	165.85	154.68	140.70	185	80	65
200 x 100	236.0	217.30	127.45	114.55	218	110	50
200 x 150	236.0	217.30	182.65	165.85	230	110	80
250 x 200	290.40	268.60	236.0	217.30	304	130	110
300 x 200	343.30	319.80	236.0	217.30	305	140	110
300 x 250	343.30	319.80	290.40	268.60	305	140	130

45deg Elbow



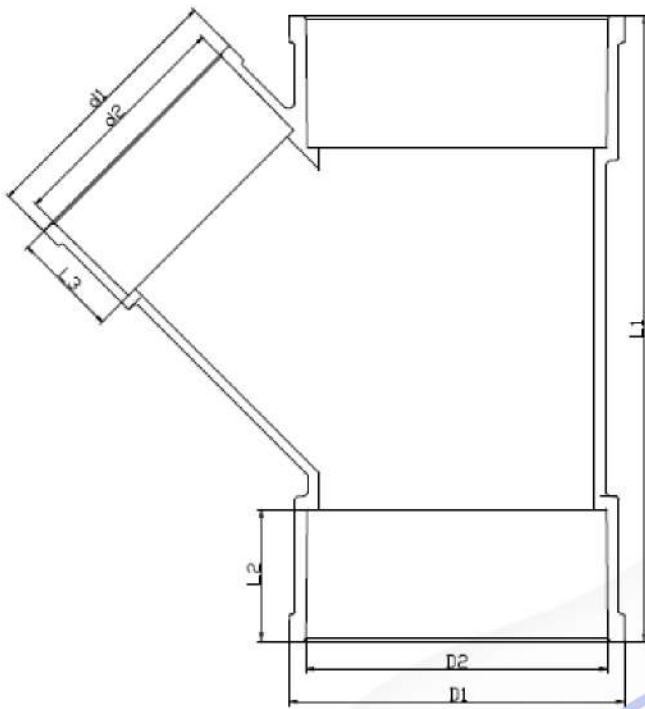
	measurements in mm			
Nominal Diameter	D1	D2	L1	L2
50	69.35	60.35	43	25
65	85.40	76.40	57	35
75	99.65	89.45	65	40
100	127.45	114.55	80	50
125	154.68	140.70	103	65
150	182.65	165.85	124	80
200	236.0	217.30	158	110
250	290.40	268.60	188	130
300	343.30	319.80	210	140

90deg Elbow



	measurements in mm			
Nominal Diameter	D1	D2	L1	L2
50	69.35	60.35	58	25
65	85.40	76.40	77	35
75	99.65	89.45	88	40
100	127.45	114.55	112	50
125	154.68	140.70	140	65
150	182.65	165.85	168	80
200	236.0	217.30	225	110
250	290.40	268.60	272	130
300	343.30	319.80	318	150

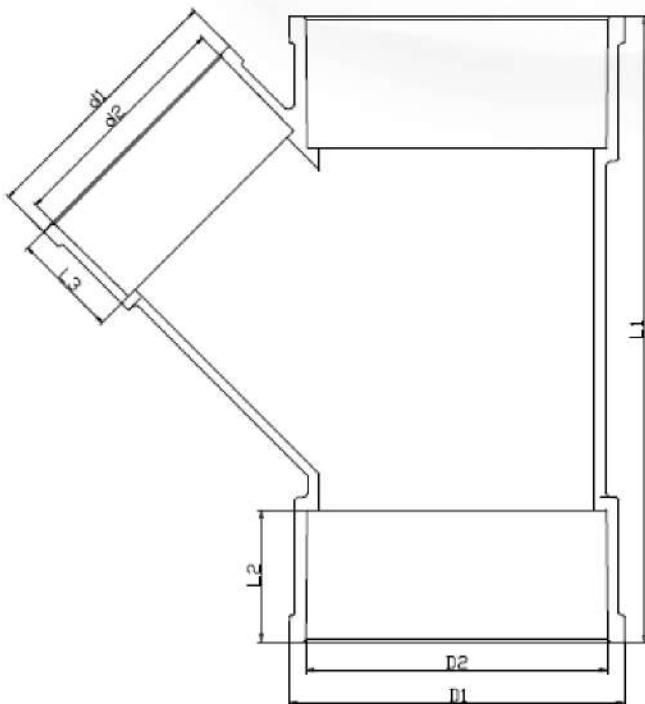
Y-Tee



	measurements in mm			
Nominal Diameter	D1, d1	D2, d2	L1	L2, L3
50	69.35	60.35	142	25
65	85.40	76.40	182	35
75	99.65	89.45	212	40
100	127.45	114.55	266	50
125	154.68	140.70	340	65
150	182.65	165.85	408	80

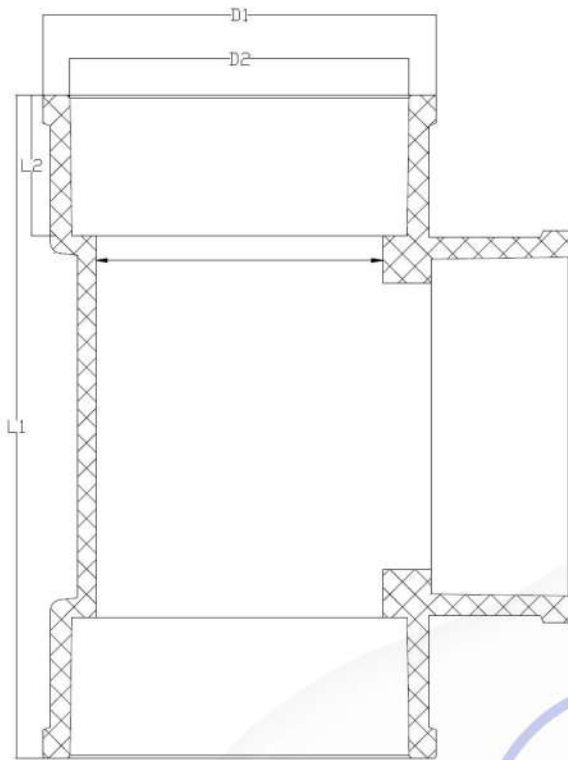


Reducing Y-Tee



	measurements in mm						
Nominal Diameter	D1	D2	d1	d2	L1	L2	L3
65 x 50	85.40	76.40	69.35	60.35	158	35	25
75 x 50	99.65	89.45	69.35	60.35	169	40	25
75 x 65	99.65	89.45	85.40	76.40	192	40	35
100 x 50	127.45	114.55	69.35	60.35	190	50	25
100 x 65	127.45	114.55	85.40	76.40	213	50	35
100 x 75	127.45	114.55	99.65	89.45	237	50	40
125 x 100	154.68	140.70	127.45	114.55	300	65	50
150 x 75	182.65	165.85	99.65	89.45	305	80	40
150 x 100	182.65	165.85	127.45	114.55	331	80	50
200 x 100	236.0	217.30	127.45	114.55	393	110	50
200 x 150	236.0	217.30	182.65	165.85	458	110	80

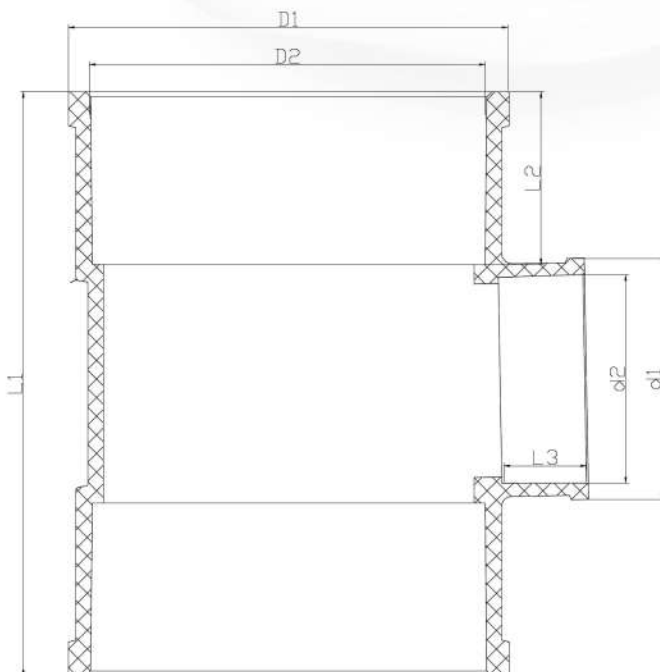
Tee



	<i>measurements in mm</i>			
Nominal Diameter	D1	D2	L1	L2
50	69.35	60.35	118	25
75	99.65	89.45	177	40
100	127.45	114.55	225	50
125	154.68	140.70	281	65
200	236.0	217.30	446	110
250	290.40	268.60	530	126
300	343.30	319.80	610	140



Reducing Tee



	<i>measurements in mm</i>						
Nominal Diameter	D1	D2	d1	d2	L1	L2	L3
65 x 50	85.40	76.40	69.35	60.35	139	35	25
75 x 50	99.65	89.45	69.35	60.35	149	40	25
75 x 65	99.65	89.45	85.40	76.40	165	40	35
100 x 50	127.45	114.55	69.35	60.35	169	50	25
100 x 75	127.45	114.55	99.65	89.45	197	50	40
150 x 75	182.65	165.85	99.65	89.45	264	80	40
150 x 100	182.65	165.85	127.45	114.55	285	80	50
150 x 125	182.65	165.85	154.68	140.70	311	80	65
200 x 100	236.0	217.30	127.40	114.55	345	110	50
200 x 150	236.0	217.30	182.65	165.85	396	110	80
250 x 150	290.40	268.60	182.65	165.85	430	130	80
250 x 200	290.40	268.60	236.0	217.30	484	130	110
300 x 200	343.30	319.80	236.0	217.30	509	140	110

WE'VE EARNED OUR MARK FOR OUR COMMITMENT TO QUALITY



CERT NO.: 2024-2-2682
ISO 9001 : 2015

A FIRST IN SOUTH EAST ASIA

Unitra Jaya takes pride in its commitment to excellence, evident in our adherence to international quality standards. Our uPVC fabrication team operates in strict compliance with ISO standards, ensuring that every product meets stringent quality benchmarks. With a focus on precision engineering and meticulous attention to detail, we strive to deliver uPVC solutions of unparalleled durability and performance.

Our dedication to ISO standards sets us apart, underlining our unwavering commitment to customer satisfaction and product reliability.

Our adherence to these globally recognized benchmarks not only reflects our pursuit of operational excellence but also reinforces our position as a trusted industry leader, providing clients with the assurance of superior quality and consistency in every project undertaken.

Quality management system certified by TÜV SÜD PSB Pte Ltd according to ISO 9001

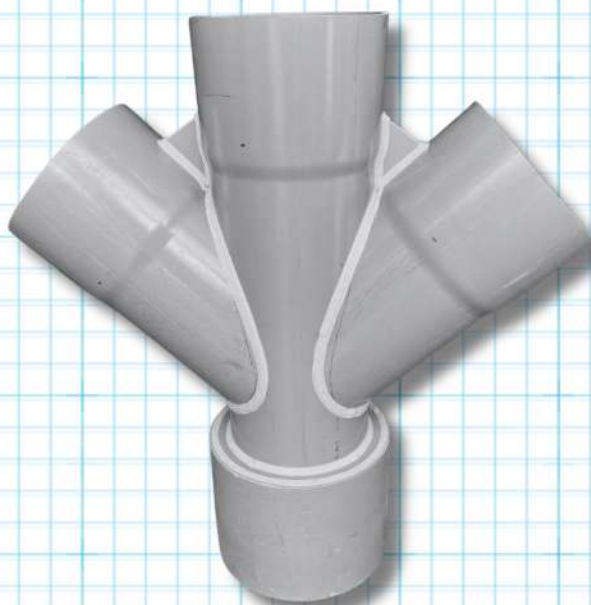
CUSTOM FITTINGS for RWDP



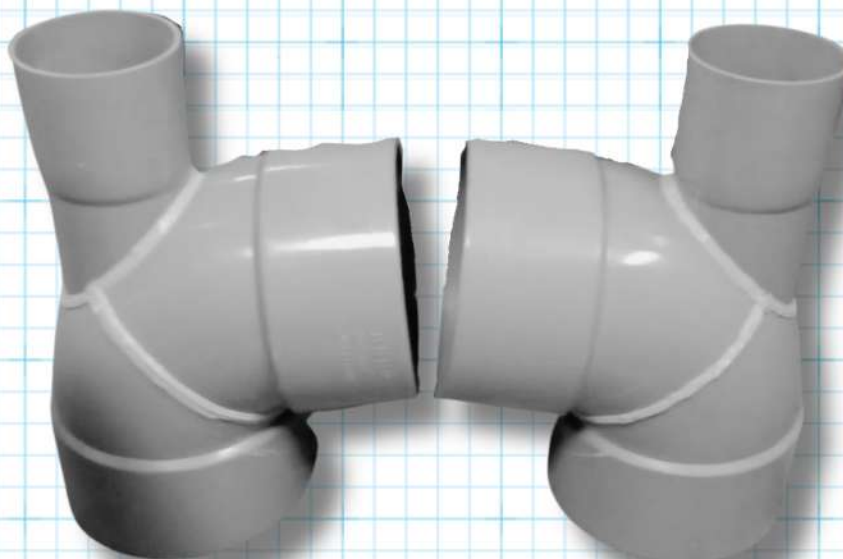
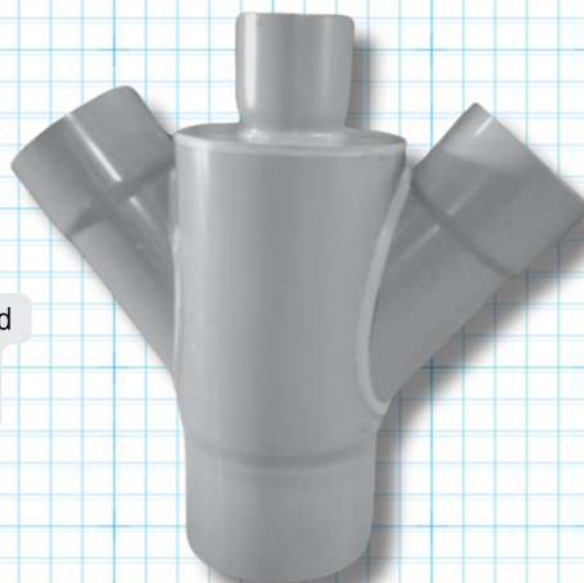
Odd-size Y-Tee



Offset Pipe
for Precast



Fabricated
Double
y-Tee



Special-angle
Elbow w/ Rodding Eye
Connector



T: 6748 2388

F: 6745 7133

A: 1076 Eunos Ave 6, 01-157, S409632

E: sales@unitra.sg

W: www.unitrajaya.com