



SINCE 1987

UNITRA JAYA

JIS pipes & fittings

TABLE OF CONTENTS

02 JIS PIPES
AW . AE . AEO

03 JIS FITTINGS
AW

07 JIS FITTINGS
AE

10 JIS FITTINGS
AE . AW - DIMENSIONS

14 FABRICATED FITTINGS

JAPAN INDUSTRIAL STANDARD PIPES 02

AW

JIS K6741 VP pipes, more commonly known as AW pipes are suitable for heavy duty usage.

The maximum working pressure is up to 10 bars and the working temperature range is from 5-45deg celsius with external pressure and 5-60deg celsius without.

This standard of pipes can be used in conjunction with pumps and mechanical plants as fluid conveyance.

AW pipes are compatible with use on JIS K6739 TS (AW) fittings.

AE


JIS K6741 VU pipes, more commonly known as AE pipes are suitable for drainage usage.

The maximum working pressure is rated as 6 bars and the working temperature range is from 5-45deg celsius with external pressure and 5-60deg celsius without.

The light pressure tolerance makes this standard of pipes more versatile. It is commonly used as rainwater down pipes, as well as for drain and vent uses like simple drainage facility and discharge of water from air-conditioning units.


Our AE pipes comes in standard lengths of 5.8m and in grey colour. For pipe diameter above 50mm, one end of the pipe is socket-ended for ease of connection to another length of pipe without the need for a socket.

AE pipes are compatible with use on JIS K6739 VU-DV (AE) fittings.

Brand: 

(measurements in mm)

Nominal Diameter	Outside Diameter (OD)	AW pipe thickness	AE pipe thickness	AEO pipe thickness
13	17.8 - 18.2	-	1.8	-
16	12.8 - 22.2	2.7	1.8	-
20	25.8 - 26.2	2.7	1.8	-
25	31.8 - 32.2	3.1	1.8	-
30	37.8 - 38.2	3.1	1.8	-
40	47.8 - 48.2	3.6	1.8	-
50	59.8 - 60.2	4.1	2.2	1.8
65	75.7 - 76.3	4.1	2.2	1.8
75	88.7 - 89.3	5.5	2.7	1.8
100	113.6 - 114.4	6.6	3.1	2.2
125	139.6 - 140.4	7.0	4.1	-
150	164.5 - 165.5	8.9	5.1	2.7
200	215.3 - 216.7	10.3	6.5	4.0
250	266.1 - 267.9	12.7	7.8	4.0
300	317.0 - 319.0	15.1	9.2	5.0
350	370.0 - 371.3	-	10.5	-
400	420.0 - 421.5	-	11.8	-
450	470.0 - 471.7	-	13.2	-
500	520 - 521.9	-	14.6	-
600	630.0 - 633.2	-	17.8	-
800	800.00	-	20.0	-



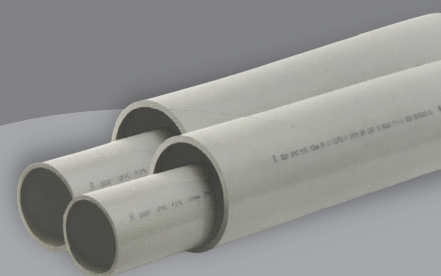
AEO

Catering to local demands for pipes for non-pressured applications, AEO pipes are made with thinner walls.

This standard of pipes is suitable for general drain and vent use without pressure.

AEO pipes comes in standard lengths of 5.8m and in grey colour. One end of the pipe is socket-ended for ease of connection to another length of pipe without the need for a socket.

AEO pipes are compatible with use on JIS K6739 VU-DV (AE) fittings.



JAPAN INDUSTRIAL STANDARD FITTINGS



Socket

Sizes (mm)

13, 16, 20, 25, 30, 40, 50, 65, 75, 100, 125, 150, 200, 250, 300

Colour

Grey



90deg Elbow

Sizes (mm)

13, 16, 20, 25, 30, 40, 50, 65, 75, 100, 125, 150, 200, 250, 300, 25x20

Colour

Grey



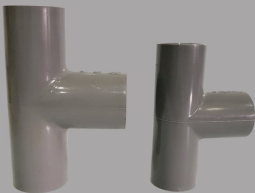
45deg Elbow

Sizes (mm)

13, 16, 20, 25, 30, 40, 50, 65, 75, 100, 125, 150, 200, 250, 300

Colour

Grey



Tee

Sizes (mm)

13, 16, 20, 25, 30, 40, 50, 65, 75, 100, 125, 150, 200, 250, 300

Colour

Grey



Cap

Sizes (mm)

13, 16, 20, 25, 30, 40, 50, 65, 75, 100, 150, 200

Colour

Grey

Reducing Socket



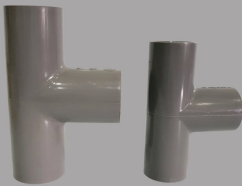
Sizes (mm)

16 x : 13
20 x : 13, 16
25 x : 13, 16, 20
30 x : 13, 16, 20, 25
40 x : 16, 20, 25, 30
50 x : 16, 20, 25, 30, 40
65 x : 40, 50
75 x : 25, 40, 50, 65
100 x : 40, 50, 75
125 x : 100
150 x : 75, 100, 125
200 x : 100, 150
250 x : 200
300 x : 250

Colour

Grey

Reducing Tee



Sizes (mm)

16 x : 13
20 x : 13, 16
25 x : 13, 16, 20
30 x : 13, 16, 20, 25
40 x : 16, 20, 25, 30
50 x : 16, 20, 25, 30, 40
65 x : 40, 50
75 x : 25, 40, 50, 65
100 x : 40, 50, 65, 75
125 x : 75, 100
150 x : 75, 100, 125
200 x : 100, 125, 150
250 x : 75, 100, 150, 200
300 x : 200, 250

10K Flange Socket



Sizes (mm)

16, 20, 25, 30, 40, 50, 65, 75, 100, 125, 150, 200, 250, 300

Colour

Grey

JAPAN INDUSTRIAL STANDARD FITTINGS



Faucet Elbow

Sizes (mm)
13, 16, 20, 25, 30, 40, 50

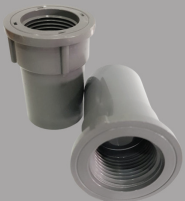
Colour
Grey



Valve Socket

Sizes (mm)
13, 16, 20, 25, 30, 40, 50, 65, 75, 100, 150

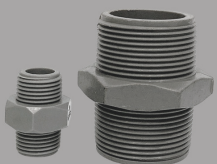
Colour
Grey



Faucet Socket

Sizes (mm)
13, 16, 20, 25, 30, 40, 50, 65, 75, 100

Colour
Grey



Nipple

Sizes (mm)
16, 20, 25, 30, 40, 50

Colour
Grey

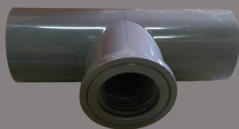


Tank Connector

Sizes (mm)
16, 20, 25, 30, 40, 50

Colour
Grey

Faucet Tee



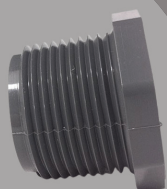
Sizes (mm)

13 x 1/2", 16 x 1/2", 20 x 1/2", 20 x 3/4", 25 x 1/2", 25 x 3/4", 25 x 1"

Colour

Grey

End Plug



Sizes (mm)

16, 20, 25, 30, 40, 50, 75, 100

Colour

Grey

JAPAN INDUSTRIAL STANDARD FITTINGS



Socket

Sizes (mm)

30, 40, 40L, 50, 50L, 65, 75, 100, 100L, 125, 150, 200, 250, 300, 350, 400

Colour

Grey



90deg Elbow

Sizes (mm)

30, 40, 50, 65, 75, 100, 125, 150, 200, 250, 300, 350, 400

Colour

Grey



45deg Elbow

Sizes (mm)

30, 40, 50, 65, 75, 100, 125, 150, 200, 250, 300, 350, 400

Colour

Grey



Tee

Sizes (mm)

30, 40, 50, 65, 75, 100, 125, 150, 200, 250, 300, 350

Colour

Grey



Cap

Sizes (mm)

40, 50, 65, 75, 100, 125, 150, 200, 250, 300

Colour

Grey



Y-Tee

Sizes (mm)

40, 50, 65, 75, 100, 125, 150, 200

Colour

Grey



Reducing Socket

Sizes (mm)

40 x : 30

50 x : 40

65 x : 40, 50

75 x : 40, 50, 65

100 x : 40, 50, 65, 75

125 x : 75, 100

150 x : 100, 125

200 x : 100, 125, 150

250 x : 150, 200

300 x : 200, 250

Colour

Grey



Reducing Tee

Sizes (mm)

40 x : 30

50 x : 30, 40

65 x : 40, 50

75 x : 40, 50, 65

100 x : 40, 50, 65, 75

125 x : 75, 100

150 x : 75, 100, 125

200 x : 100, 125, 150

250 x : 150, 200

300 x : 200, 250

Colour

Grey

Reducing Y-Tee



Sizes (mm)

65 x : 50

75 x : 50, 65

100 x : 50, 65, 75

125 x : 100

150 x : 100, 125

200 x : 100, 150

Colour

Grey

Screw Cap



Sizes (mm)

25, 30, 40, 50, 65, 75, 100, 125, 150, 200, 250

Colour

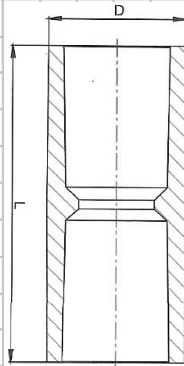
Grey

JAPAN INDUSTRIAL STANDARD FITTINGS

AW

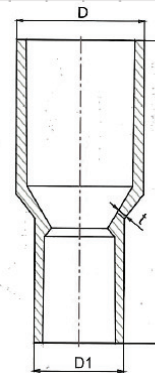
Socket

Nominal Ø	d	D	L
16	22	29	67
20	26	33	77
25	32	40	87
35	42	51	95
40	48	57	117
50	60	70	133
65	76	87	145
75	89	102	155
100	114	130	200
150	165	186	300
200	216	238	360
250	267	287	389



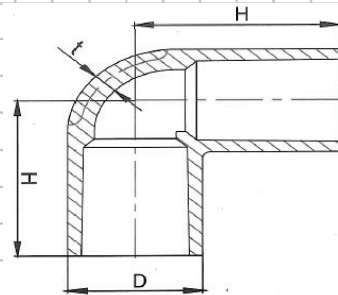
Reducing Socket

Nominal Ø	d1	d2	D1	D2	L
20 x 16	22	29	26	33	71
25 x 16	22	29	32	40	85
25 x 20	26	33	32	40	84
35 x 16	22	29	42	49	99
35 x 20	26	33	42	40	132
35 x 25	32	40	42	51	94
40 x 16	22	29	48	57	110
40 x 20	26	33	48	57	116
40 x 25	32	40	48	57	114
40 x 35	42	49	48	37	115
50 x 16	22	29	60	70	125
50 x 20	26	33	60	70	126
50 x 25	32	40	60	70	140
50 x 35	42	49	60	70	125
50 x 40	48	57	60	70	136
65 x 40	48	57	76	87	145
65 x 50	60	70	76	87	149
75 x 25	32	40	89	102	127
75 x 35	42	49	89	102	141
75 x 40	48	57	89	102	150
75 x 50	60	70	89	102	165
75 x 65	76	87	89	102	159
100 x 40	48	57	114	130	178
100 x 50	60	70	114	130	186
100 x 65	76	87	114	130	190
100 x 75	89	102	114	130	190
150 x 75	89	102	165	186	256
150 x 100	114	130	165	186	295
150 x 125	140	157	165	186	272
200 x 100	114	124	216	227	340
200 x 125	140	157	216	238	345
200 x 150	165	184	216	238	350
250 x 150	216	238	267	287	420



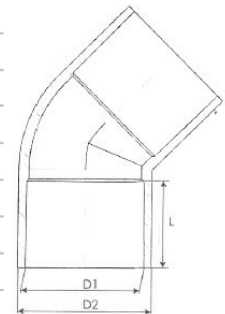
90deg Elbow

Nominal Ø	d	D	L
16	22	29	43
20	26	33	50
25	32	40	58
35	42	51	70
40	48	57	82
50	60	70	96
65	76	87	110
75	89	102	120
100	114	130	153
125	140	157	187
150	165	186	230
200	216	236	290
250	267	287	280

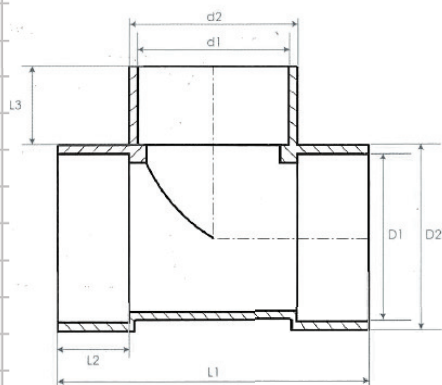


45deg Elbow

Nominal Ø	D1 (STD)	D2	L
40	48	57	55
50	60	70	63
65	76	87	61
75	89	102	64
100	114	129	84
150	165	185	132
200	216	236	145



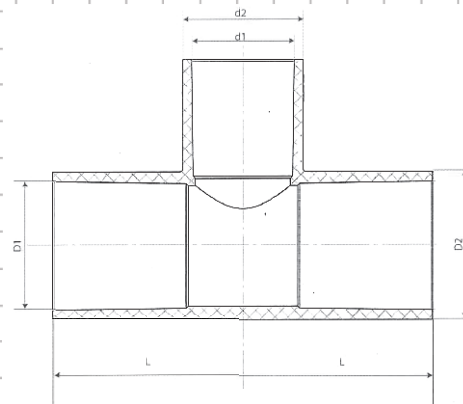
Tee



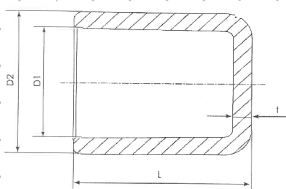
Nominal Ø	D1	D2	d1	d2	L1	L2	L3
35	42	48	42	48	88	20	20
40	48	54	48	54	98	22	22
50	60	67	60	67	118	25	25
60	76	83	76	83	155	35	35
75 X 40	89	97	48	54	135	40	22
75 X 50	89	97	60	67	149	40	25
75 X 60	89	97	76	83	165	40	35
75	89	97	89	97	177	40	40
100 X 50	114	124	60	67	169	50	25
100 X 75	114	124	89	97	200	50	40
100	114	124	114	124	225	50	50
125 X 100	140	151	114	124	256	65	50
125	140	151	140	151	281	65	65
150 X 100	165	178	114	124	287	80	50
150	165	178	165	178	339	80	80
200 X 100	216	227	114	124	335	105	50
200	216	227	216	227	441	105	105

Reducing Tee

Nominal Ø	D1	D2	d1	d2	L
16	22	29	22	29	43
20	26	33	26	33	50
25	32	40	32	40	58
35	42	51	42	51	69
40	48	57	48	57	82
50	60	70	60	70	96
65	76	87	76	87	110
75	89	102	89	102	120
100	114	130	114	160	152
150	165	186	165	186	230
200	216	238	216	238	258
20 x 16	22	29	26	33	48
25 x 16	22	29	32	40	53
25 x 20	26	33	32	40	55
35 x 16	22	29	42	51	56
35 x 20	26	33	42	51	59
35 x 25	32	40	42	51	62
40 x 16	22	29	48	57	68
40 x 20	26	33	48	57	70
40 x 25	32	40	48	57	73
40 x 35	42	51	48	57	76
50 x 16	22	29	60	70	76
50 x 20	26	33	60	70	78
50 x 25	32	40	60	70	81
50 x 35	42	51	60	70	84
50 x 40	48	57	60	70	90
75 x 25	32	40	89	102	93
75 x 40	48	57	89	102	100
75 x 50	60	70	89	102	105
75 x 65	76	87	89	102	114
100 x 50	60	70	114	130	125
100 x 75	89	102	114	130	140

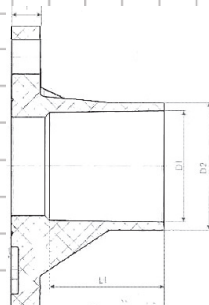


Cap



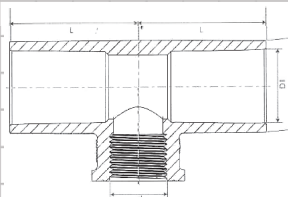
Nominal Ø	D1	D2	t	L
16	22	29	3,5	33,5
20	26	33	3,5	38,5
25	32	40	4	44
50	60	70	5	68
65	76	87	6,6	96
75	89	102	8	105
100	114	130	10	138
150	165	186	13	205
200	216	238	10,5	183

Flange Socket



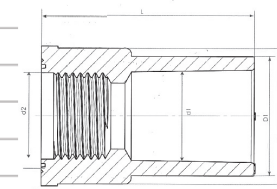
Nominal Ø	D1	D2	L1	L2	t
50	60	70	63	84	16
65	76	86	61	93	18
75	89	101	64	96	18
100	114	130	84	118	18
150	165	185	132	164	22

Faucet Tee



Nominal Ø	d	D1	D2	L
16 x 1/2"	22	22	29	43
16 x 3/4"	26	22	33	47
20 x 3/4"	26	26	33	51

Faucet Socket

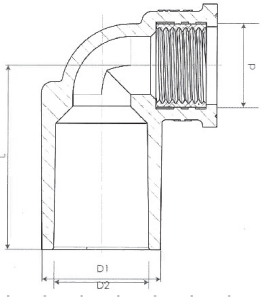


Nominal Ø	d1	d2	D1	D2	L
16 x 1/2"	22	26	29	30	52
16 x 3/4"	26	22	33	36	60
20 x 3/4"	26	26	33	37	59
25 x 1/2"	22	32	40	47	62
25 x 3/4"	26	32	33	47	67
25 x 1"	32	32	40	46	68
35 x 1-1/4"	42	42	51	56	80
40 x 1-1/2"	48	48	57	60	91
50 x 2"	60	60	70	74	106
65 x 2-1/2"	76	76	87	98	110

JAPAN INDUSTRIAL STANDARD FITTINGS

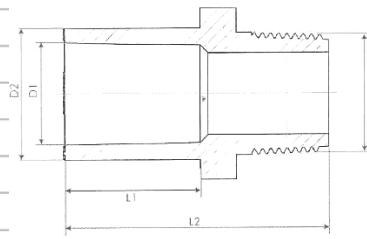
AW

Faucet Elbow



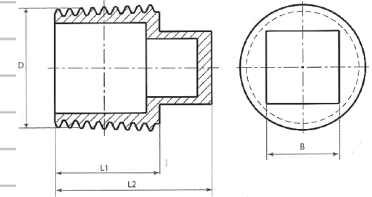
Nominal Ø	d	D1	D2	L
16 x 1/2"	22	22	33	43
20 x 1/2"	22	26	33	43
20 x 3/4"	26	26	33	51
25 X 1"	32	32	40	59

Valve Socket



Nominal Ø	d	D1	D2	L1	L2
16 x 1/2"	22	22	29	25,5	50
16 x 3/4"	22	26	33	31,5	60
20 x 1/2"	26	26	33	35,5	64
20 x 3/4"	26	22	29	30	58,5
25 x 1/2"	32	22	29	40	71
25 x 3/4"	32	26	33	40	71
25 x 1"	32	32	40	40	71
35 x 1-1/4"	42	42	51	44	80
40 x 1-1/2"	48	48	57	55	92
50 x 2"	60	60	70	63	106
65 x 2-1/2"	76	76	87	61	118
75 x 3"	89	89	102	72	127
100 x 4"	114	114	130	92	157

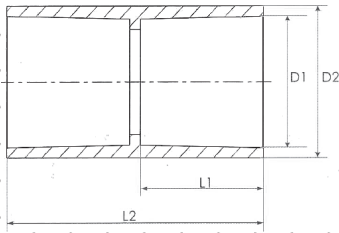
End Plug



Nominal Ø	L1	L2	B	D
16	19	27	13	22
20	19	28	15	26
25	24	36	18	32

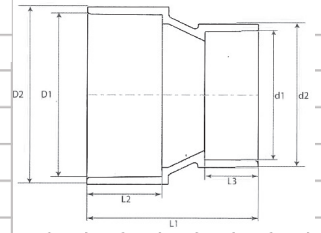
Socket

Nominal Ø	D1	D2	(STD)(STD)	
			L1	L2
35	42	48	20	43
40	48	54	22	47
50	60	67	25	53
65	76	83	35	73
75	89	97	40	84
100	114	124	50	104
125	140	151	65	134
150	165	178	80	164
200	216	227	105	215
250	267	280	125	256



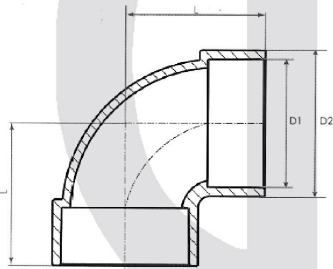
Reducing Socket

Nominal Ø	D1	D2	d1	d2	(STD)(STD)(STD)		
					L1	L2	L3
40 X 35	48	54	42	48	62	22	20
50 X 35	60	67	42	48	65	25	20
50 X 40	60	67	48	54	67	25	22
65 X 40	76	83	48	54	77	35	22
65 X 50	76	83	60	67	80	35	25
75 X 35	89	97	42	48	81	40	20
75 X 40	89	97	48	54	87	40	22
75 X 50	89	97	60	67	90	40	25
75 X 65	89	97	76	83	100	40	35
100 X 50	114	124	60	67	105	50	25
100 X 65	114	124	76	83	115	50	35
100 X 75	114	124	89	97	120	50	40
125 X 100	140	178	114	124	150	80	50
150 X 75	165	178	89	97	161	80	40
150 X 100	165	178	114	124	170	80	50
150 X 125	165	178	140	151	185	80	65
200 X 100	216	227	114	178	225	105	80
200 X 150	216	227	165	178	252	105	80



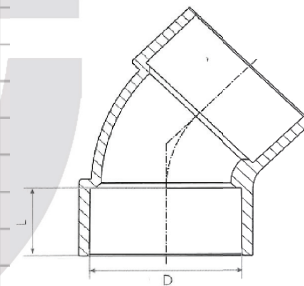
90deg Elbow

Nominal Ø	D1	D2	(STD)
			L
35	42	48	44
40	48	54	49
50	60	67	58
65	76	83	77
75	89	97	88
100	114	124	112
125	140	151	140
150	165	178	168
200	216	227	225
250	267	280	267
315	318	333	308



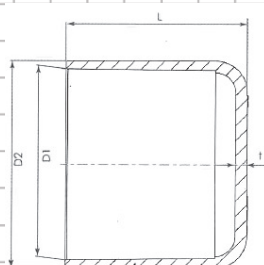
45deg Elbow

Nominal Ø	D1	(STD)
		L
35	42	20
40	48	22
50	60	25
65	76	35
75	89	40
100	114	50
125	140	65
150	165	80
200	216	105
250	267	125
315	318	140



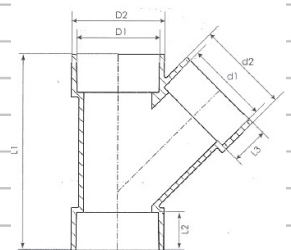
Cap

Nominal Ø	D1	D2	L	t
				35
40	48	54.5	60	3.5
50	60	67	66	4
75	89	97	85	5.5
100	114	124	100	6.5



Y-Tee

Nominal Ø	D1	D2	d1	d2	(STD)(STD)(STD)		
					L1	L2	L3
40 X 35	48	54	42	48	106	22	20
40	48	54	48	54	114	22	22
50 X 35	60	67	42	48	114	25	20
50	60	67	60	67	142	25	25
75 X 50	89	97	60	67	169	40	25
75	89	97	89	97	212	40	40
100 X 50	114	124	60	67	190	50	25
100 X 75	114	124	89	97	237	50	40
100	114	124	114	124	266	50	50
125 X 100	140	151	114	124	299	65	50
150 X 100	165	178	114	124	331	80	50
150	165	178	165	178	414	80	80



FABRICATED FITTINGS

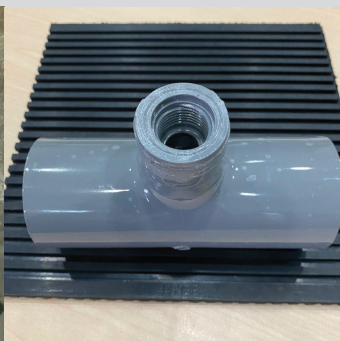
We are one of the key players in PVC fabrication and in the customizing of PVC solutions for a multitude of purposes. Given our in-depth product knowledge and technical expertise, we provide consultancy and design-and-build services to our customers.

We specialise in fabrications to achieve engineering specifications in any building and construction project. Some of our common job orders include large diameter PVC fittings reinforced to withstand heavy duty usage, puddle flanges and special fittings with reducing sizes that is not available in the standard fitting range.

We also provide PVC welding for on-site repairs. Our team of fabrication technicians are equipped with years of expertise and experience to deliver your fabrication requirements. All finished products are tested in-house and ready for installation.

Fabricated fittings comes with the option to be fibre-glass wrapped to provide extra reinforcement.

We strive to deliver products assured of product integrity and quality finishing.





CONTACT US:

T: 6748 2388

F: 6745 7133

E: sales@unitra.sg

W: www.unitrajaya.com